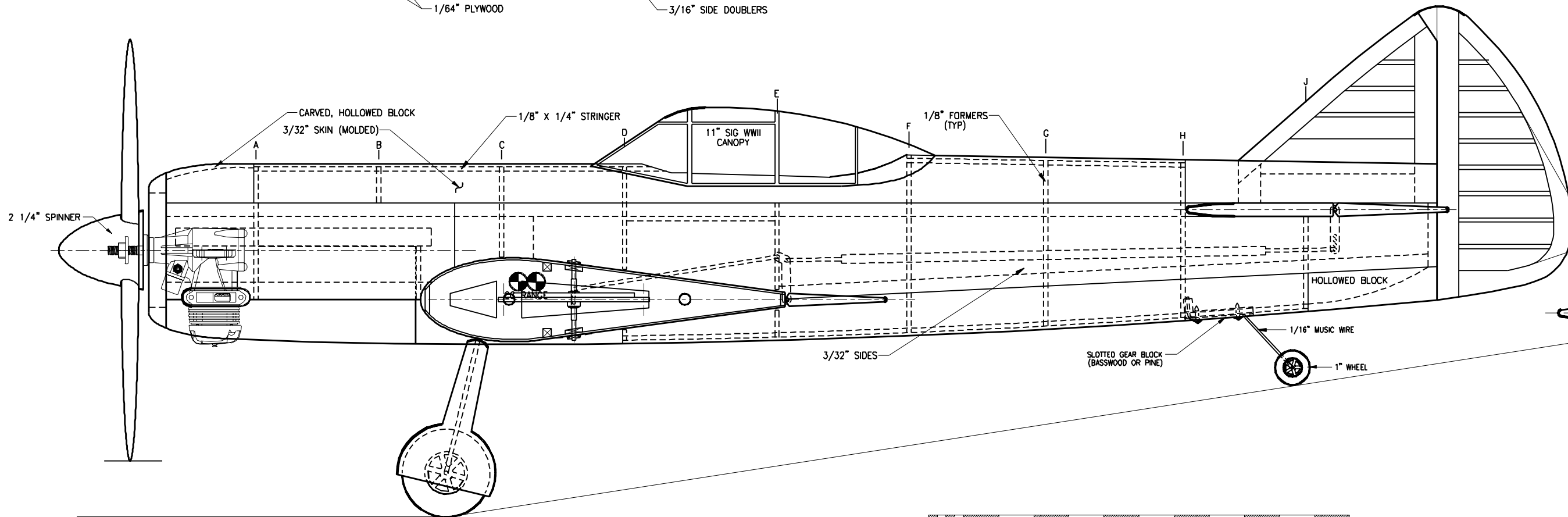
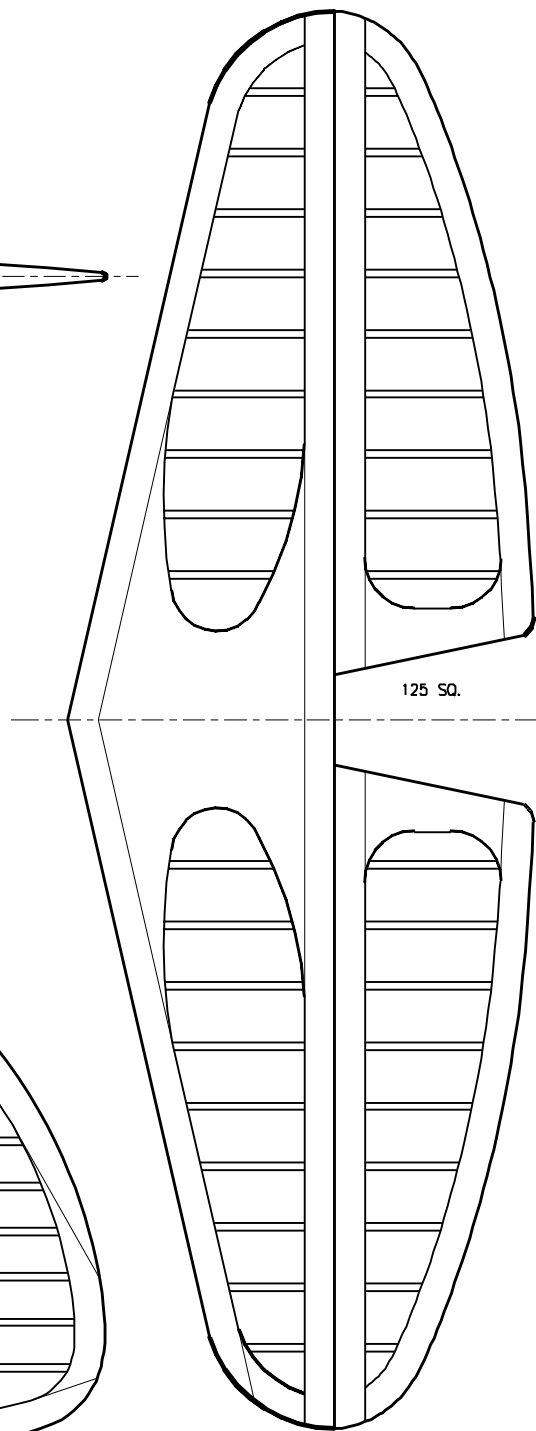
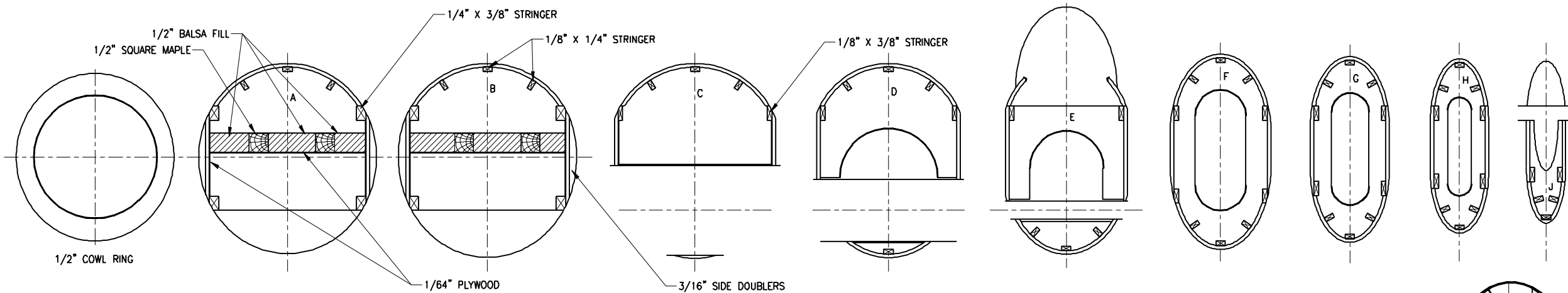
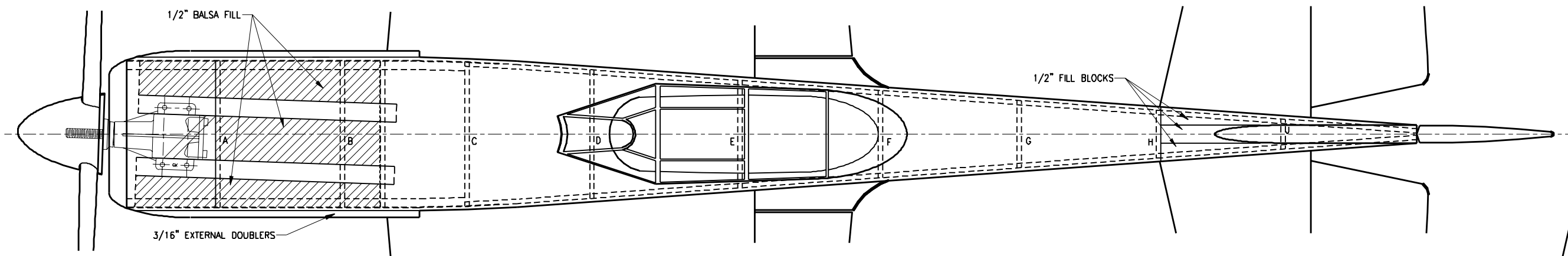
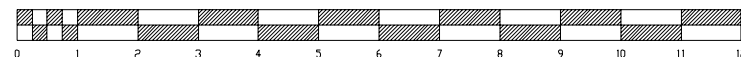


WARNING- DANGER!
DO NOT FLY NEAR POWER LINES!
INSTANT DEATH CAN RESULT FROM
CONTACT WITH, OR PROXIMITY TO
ELECTRIC POWER LINES.



TAIL CONSTRUCTION NOTES:
THE TAIL PARTS ARE ALL CONSTRUCTED WITH A
3/8" FRAME AND 1/8" RIBS. TAPER THE TIPS
TO 3/16" THICK. NOTE THE SAMPLE TAIL
SECTION AS A GUIDE.



TVC=43.5

LAVOCHKIN LA-7
DESIGNED BY PAT JOHNSTON
53 1/2" SPAN 574 SQ. IN.
.35-.51 ENGINES 40 TO 48 oz.
AUTOCAD by PAT JOHNSTON 3-8-11

ALL RIBS~ 1/16" OR LIGHT 3/32" Balsa

WARNING-- DANGER!
DO NOT FLY NEAR POWER LINES!
INSTANT DEATH CAN RESULT FROM
CONTACT WITH, OR PROXIMITY TO
ELECTRIC POWER LINES.

